

AMBIAL

THE VERSATILE
FOLDING DOOR



IMAGINE WHAT'S NEXT

TECHNAL



AMBIAL

/ THE ORIGINAL HIGH-PERFORMANCE XXL APERTURES

The AMBIAL folding door can be fully opened outwards, offering you a panoramic view, flooding rooms with natural light and blurring the boundaries between indoors and outdoors.

HIGH PERFORMANCE

Designed to be both durable and easy to use, the AMBIAL supported folding door can incorporate up to 10-leaf with a maximum height of 3 m for an aperture of 12 m wide, in a straight line or on a corner, without any visible frame. With a 75 mm module and supported by Technal's exclusive trolleys, chosen for their resilience, each leaf can support a weight of up to 150 kg.

AMBIAL also guarantees thermal and acoustic performance, as well as high-level weather resistance and water resistance.

SLEEK DESIGN

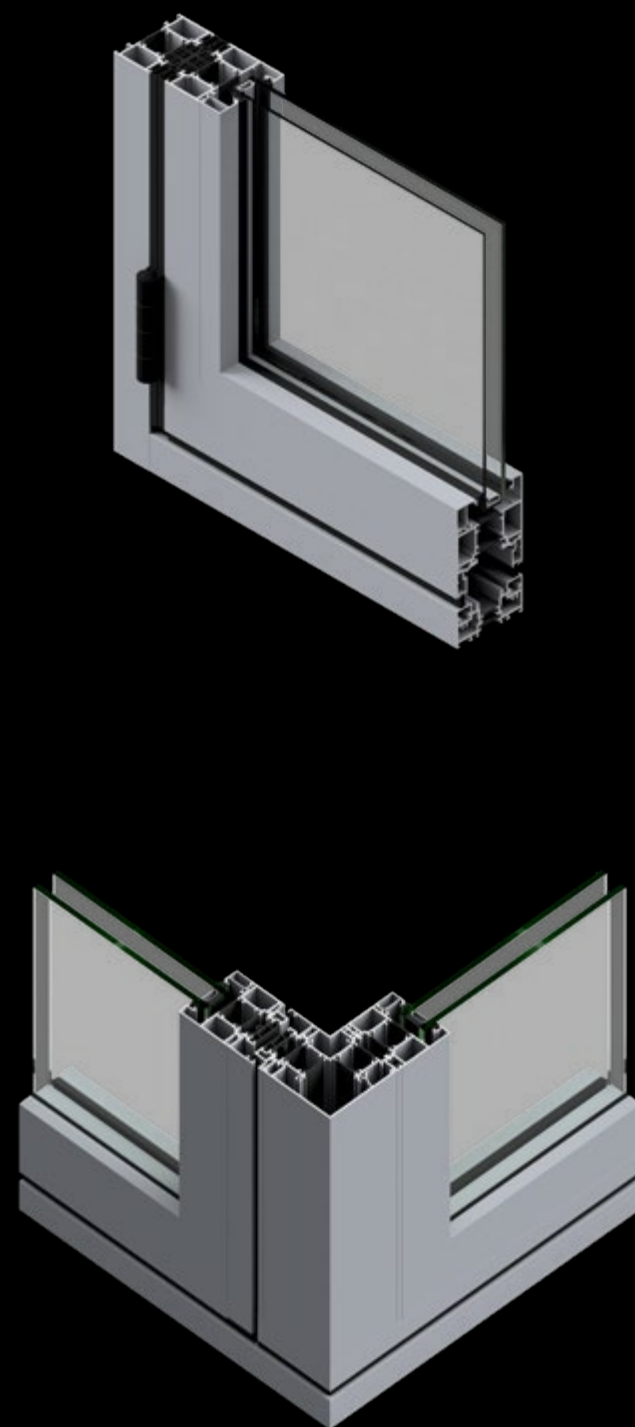
The finishes have been designed with the greatest of attention to detail, to offer a harmonious appearance, both when open and closed. The frames are flush-fitting, with slim, well-balanced profiles. The upper and lower trolleys and fixings are covered, to give a uniform overall look, even when open. Drainage is concealed with an invisible drainage channel on all configurations.

WIDE SELECTION OF CONFIGURATIONS

Whether in line or on a corner, inward or outward opening, from the centre or from one of the sides, AMBIAL can be adapted to suit all architectural wishes, whether a new-build or renovation: villas, architect-designed houses, extensions, hotel or restaurant terraces, balconies of apartment blocks, etc.

AMBIAL

/ THE MULTI-SPACE FOLDING DOOR



KEY FEATURES AND INNOVATIONS

LARGE DIMENSIONS

- Large sizes available up to: L 1.2 m x H 3 m per leaf, with possible configurations from 1 to 10 leaves for an aperture of up to 12 m wide
- Weight: up to 150 kg per leaf
- Glazing thickness from 9 to 52 mm

AESTHETICS AND COMFORT

- Completely flush appearance in closed position, with clean lines
- Uniform appearance in open position
- Wide choice of configurations, in a straight line or at an angle, with an inward or outward opening from the centre, from the corner or from one of the sides
- Exclusive designed, ultra-flat handle and key
- Easy to operate, thanks to the upper and lower trolleys, foldable pull handle and optional exterior handle on the service leaf
- The double brush option allows for a flush-fitting threshold
- Registered design

SOFTWARE

- In-line version available in Techdesign, Tech3D and Techacoustic

RELIABILITY AND PROTECTION

- Secure design, to keep the door on the upper and lower tracks, thanks to the anti-derailment wheels and security bolt
- Option to lock the middle leaves with ultra-flat handles and keys so that the profiles or keys are not damaged when in the folded position
- Closures can be adapted depending on the function: 2 points with or without key, 3 points with key or 2 lever points for semi-fixed leaf
- Blocking magnets to protect the door from any shocks when in the open position, or if it is windy or if the door is incorrectly operated
- Security system to prevent the middle leaves being opened when the main door is closed
- Protective space between joints to avoid fingers being trapped
- Optional anti-slip threshold frame

PERFORMANCE

- Supported system for taking the load from the floor
- Excellent thermal and sound insulation
- Endurance of over 30 year for the hardware, based on daily opening/closing
- The leaves are as easy to open as a sliding door
- Maximum resistance to rust on all hardware
- Rebated frame for improved weather resistance.
- 2 heights of openings available:
 - 63 mm in standard version
 - 73 mm in reinforced version for large dimensions

AMBIAL / THE FINE DETAILS

HIGH-END FINISHES

- Straight, black vertical line, in line with the edge of the leaves when viewed in the open position
- In the closed position, black hinges concealed in the vertical line of the seal
- Black hardware, seals and brush seals
- Screw heads covered with black caps, enhancing weather resistance
- Concealed drainage
- Two options for concealing vertical grooves:
 - Black synthetic profile
 - Black seal which improves thermal performance



HIGHLY RESISTANT HARDWARE

- Trolleys covered with black caps which help with cleaning the tracks (design exclusive to Technal)
- Stainless steel tracks and wheels
- Simple adjustment on site:
 - Vertical +3 mm / -1 mm
 - Lateral +5 mm / -5 mm
- Anti-derailment load-bearing wheel as well as security wheel at the top
- Perfect security, thanks to a 3-point locking system with insulated key lock



EXCLUSIVE HANDLE DESIGN

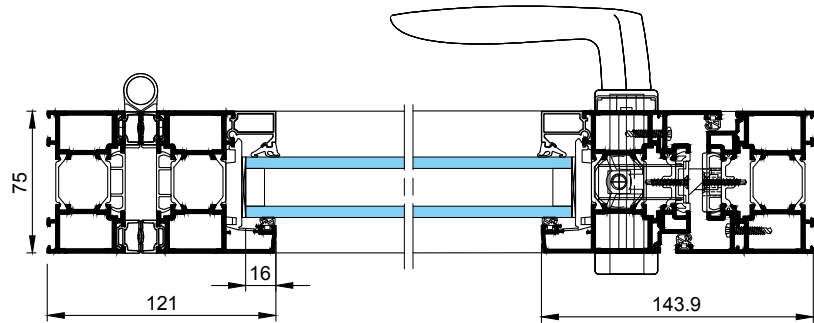
- Square, ultra-flat handle and key design
- Handles and key covers can be lacquered to match all Technal colours
- Pull handle mounted on hinges or on support for easy closure



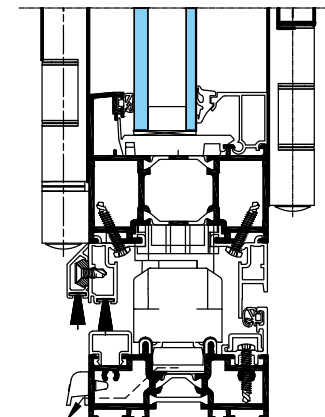
AMBIAL / IN LINE

PERFORMANCES

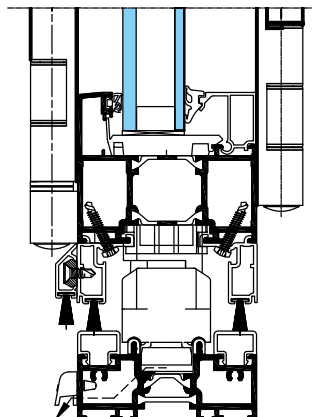
- Optimised heat loss values: $U_w = 0.95 \text{ W/m}^2\cdot\text{K}$ with $U_g = 0.5 \text{ W/m}^2\cdot\text{K}$ $S_w = 0.37$ and $TL_w = 0.53^*$
*These values are obtained with double glazing of $1.0 \text{ W/m}^2\cdot\text{K}$ and insulating crossbar with 5 leaves measuring $L 6 \text{ m} \times H 3 \text{ m}$.
- Weather Resistance Performance:
 - Air : Class 3
 - Water: Class 8A
 - Wind: Class C3
- Acoustic performance: up to 43 dB (Rw) acoustic attenuation
- Operating force: Class 1 (less than 100 N)
- Mechanical strength: Class 3
- Corrosion resistant hardware: Grade 5 (420 h in saline mist)
- Hardware endurance test: grade 5 / 25,000 cycles (test conducted in accordance with EN13126-15:2008)
- Optional cylinder lock tested to 400,000 opening and closing cycles



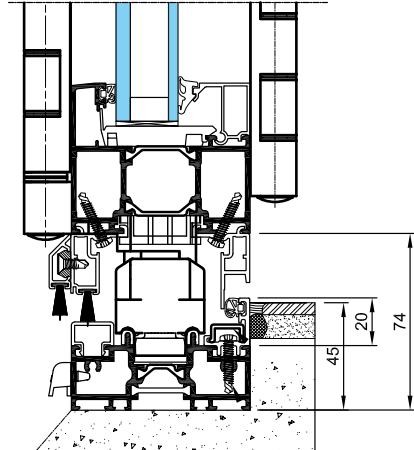
Door 1-leaf inward opening



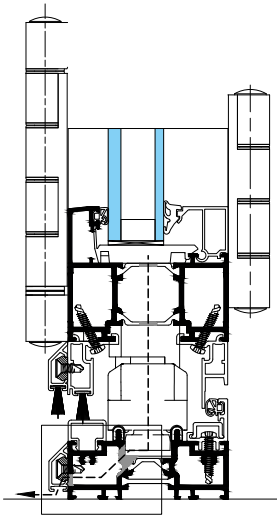
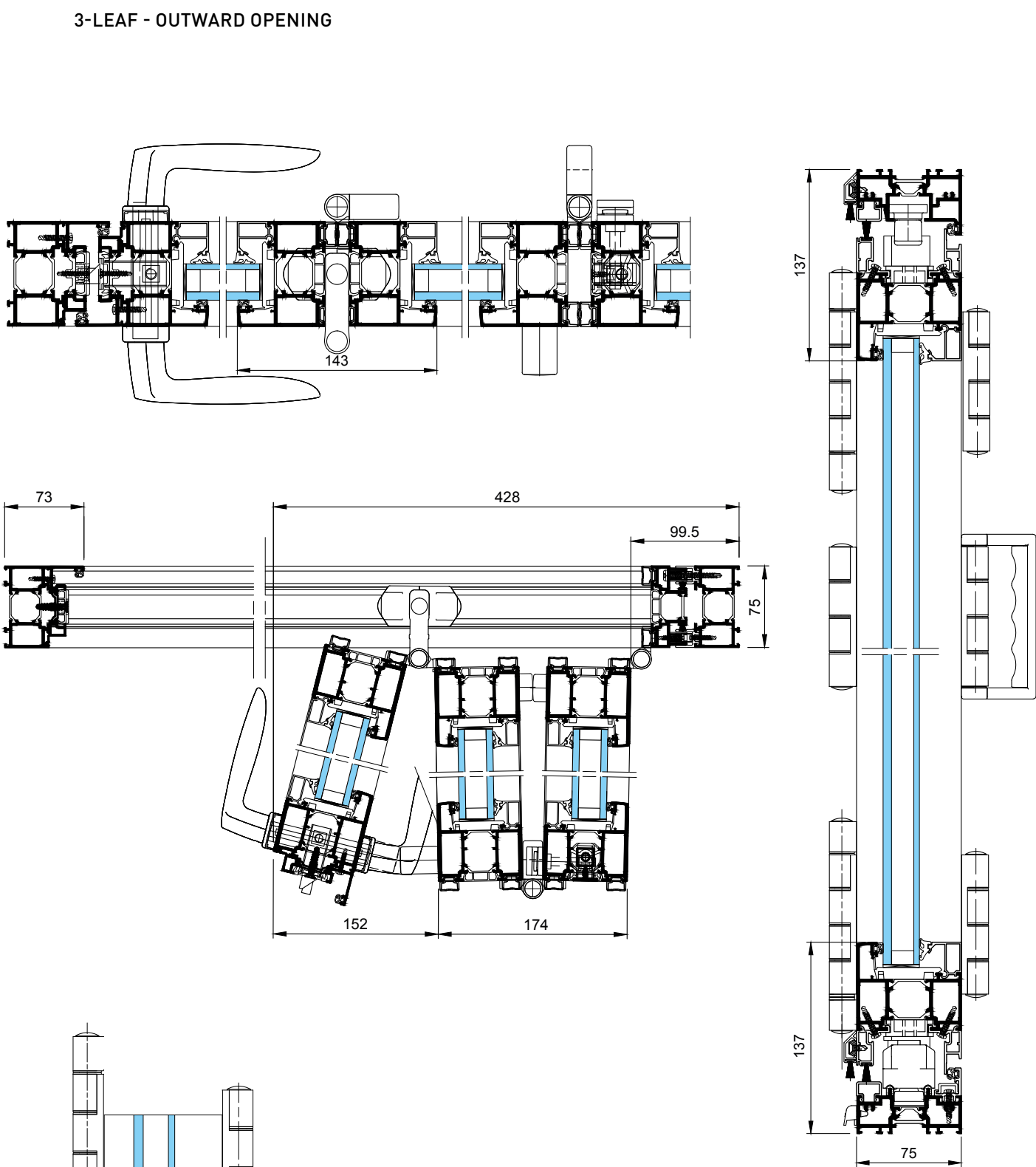
Outward opening: with rebate



Outward or inward opening: with double brush



Outward opening: recessed disabled access threshold



Concealed drainage in option for all configurations

AMBIAL / CORNER DOOR

HIGH-LEVEL FINISH

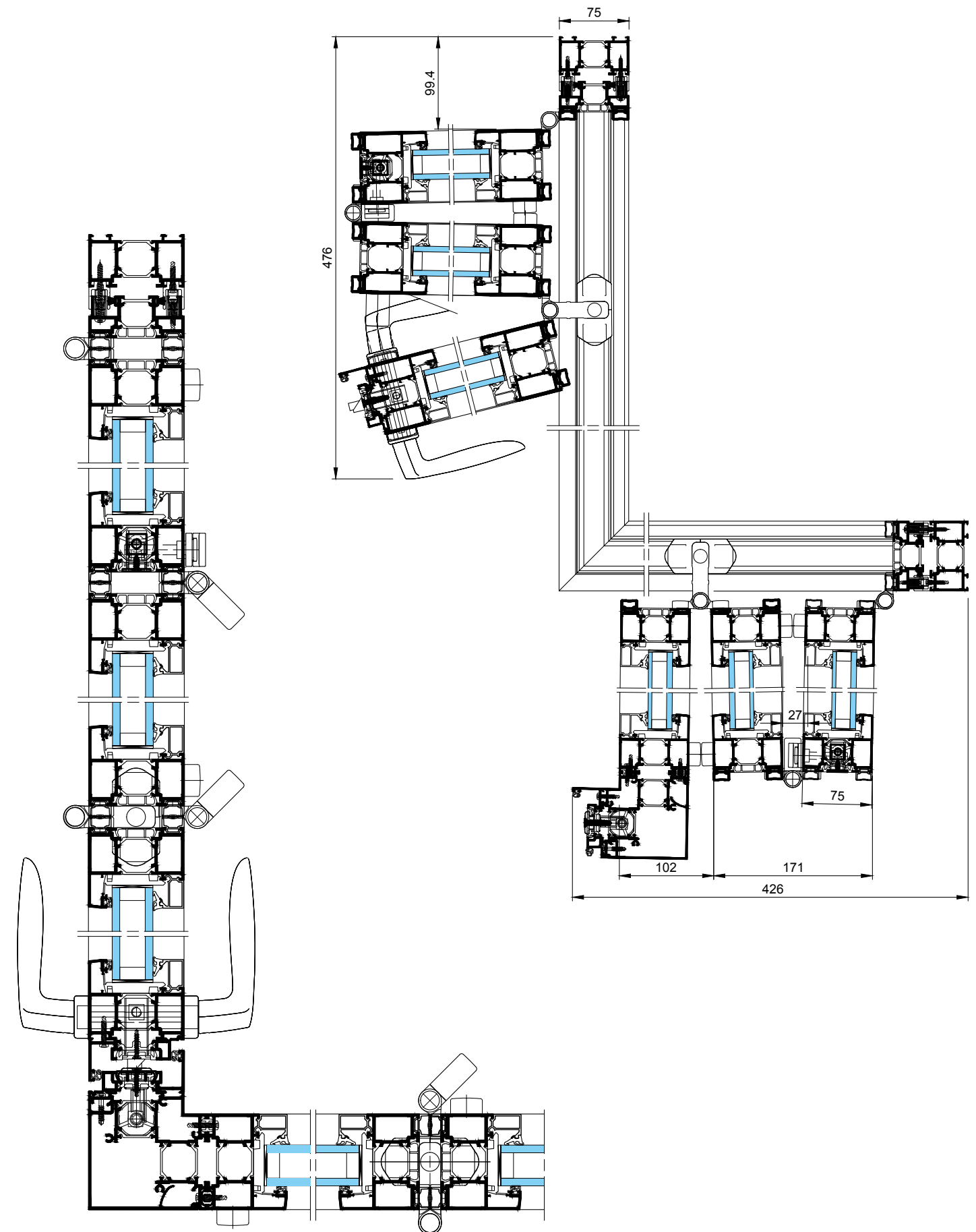
- Frame connected to the opening profile, ensuring rigidity and high performance
- A total of 2 to 10 opening leaves
- Convex corner solution with inward or outward opening: concave corner available upon request
- Thermal performance maintained

ELEGANT DESIGN

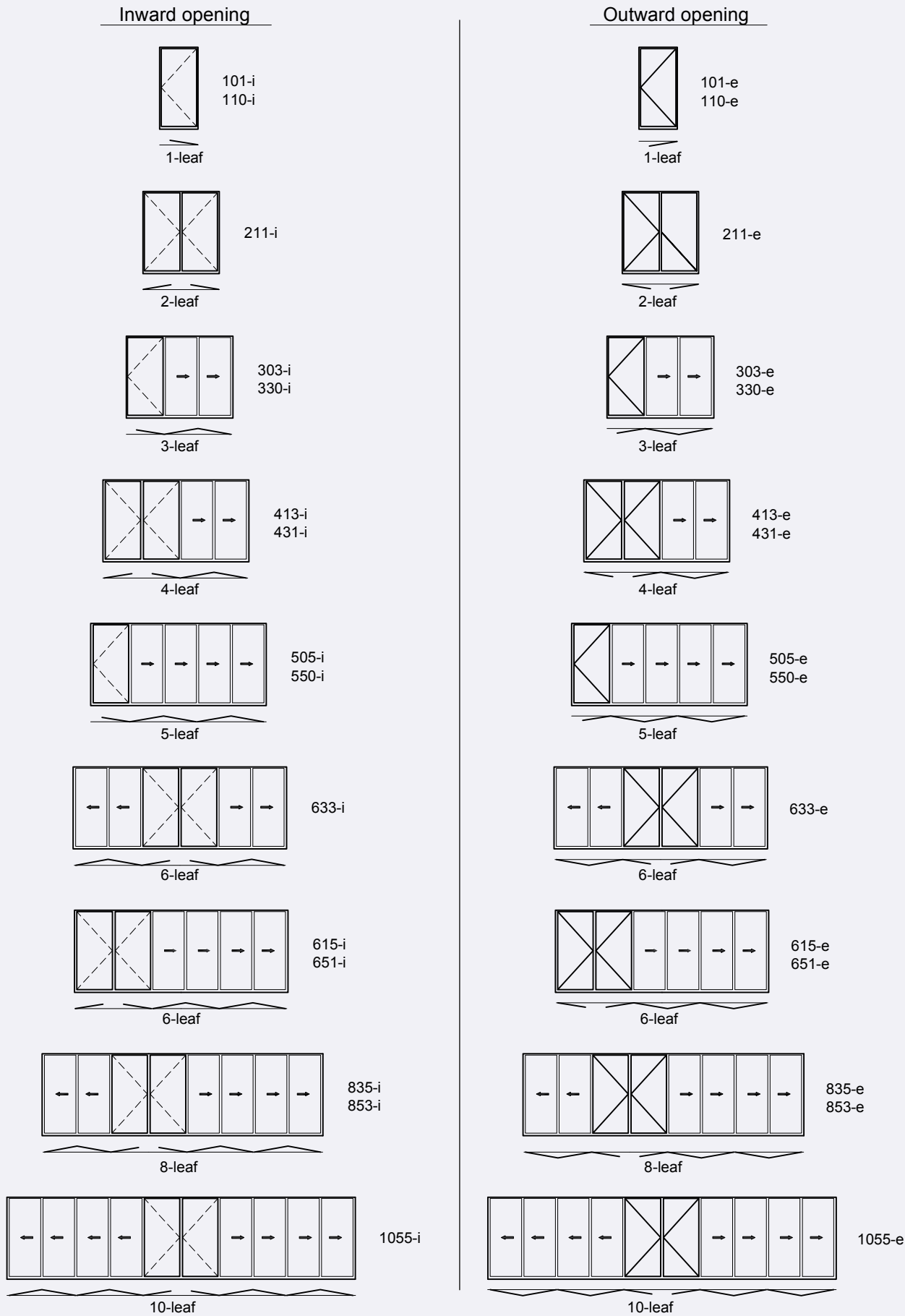
- Minimal corner post profile: 93 mm
- Flush-fitting design maintained for the 63 mm opening
- Accessories: Lacquered visible components
- Lever housing: allows one side to be opened while keeping the semi-fixed part closed
- Only one handle needed on the corner
- Semi-fixed part can be left locked
- Visual harmony, both open and closed
- Threshold can be customised according to climatic conditions



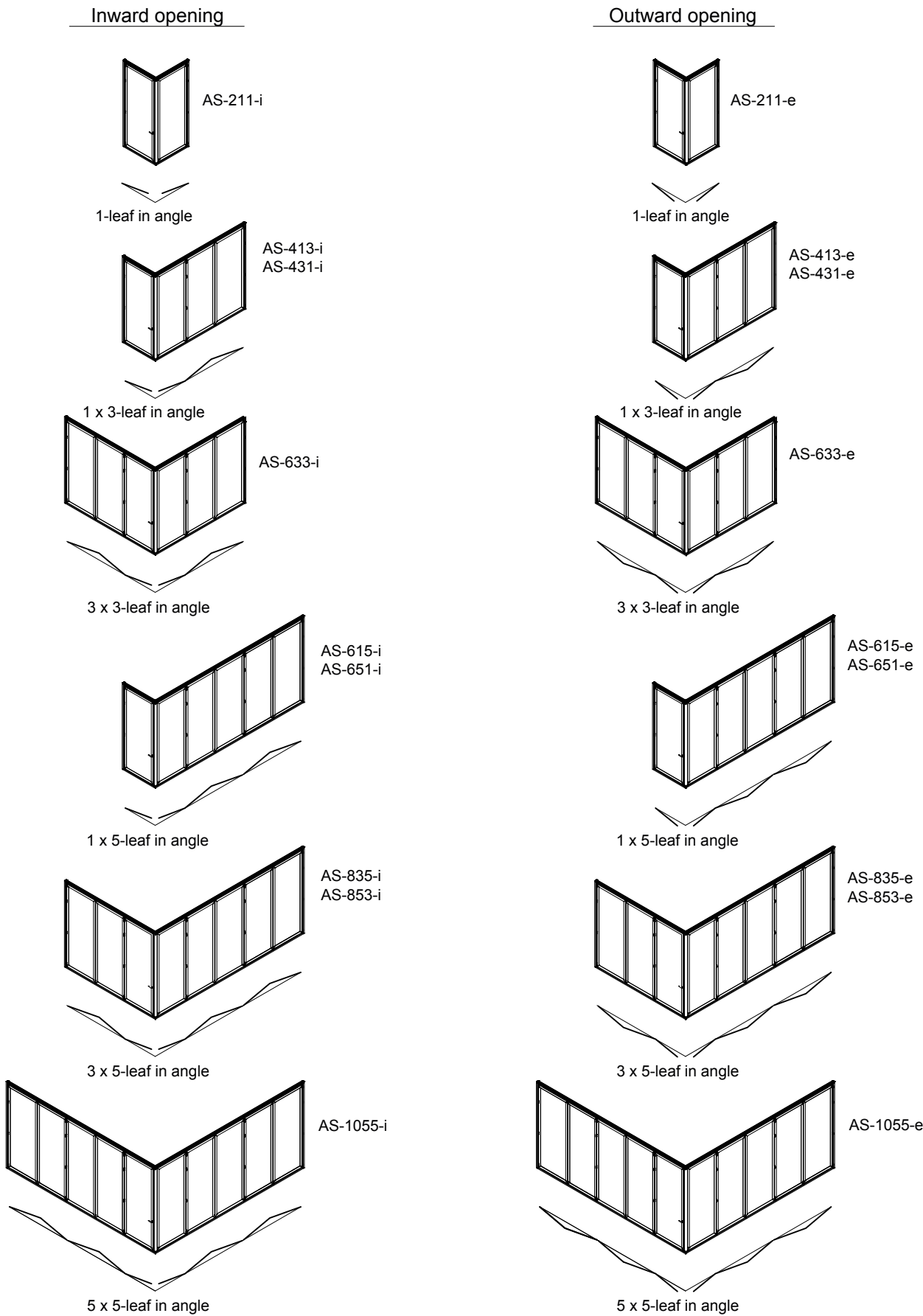
3 X 3-LEAF - CONVEX ANGLE



CONFIGURATIONS



Letters	1 st number	2 nd number	3 rd number	Opening
AS = convex angle	Total number of leaf	leaf on the leaf	leaf on the right	i = inward e = outward





PERFORMANCE

AEV PERFORMANCES: (Air, Water, Wind)			
AMBIAL	Air permeability	Water tightness	Resistance to wind pressure
3-leaf	Class 3	Class 8A	Class C3

ACOUSTIC PERFORMANCES						
AMBIAL	Glazing	Thickness	Performances glazing		Performances AMBIAL	
			Rw	RA,tr	Rw	RA,tr
3 leaves open out Threshold with rebate 3.65 x 2.18 m	4/16/4	24	30	26	32	28
	44.2Si-16-10	35	45	39	42	36

THERMAL PERFORMANCE - Uw				
Configurations	Size W x H in m	Uw with Ug 0.6 triple glazing	Uw with Ug 0.5 warm edge triple glazing	Uw with Ug 1.0 double glazing
3-leaf	3.45 x 2.18	1.4	1.2	1.6
5-leaf	6.00 x 3.00		0.95	
6-leaf	6.90 x 2.18	1.3	1.1	1.6
10-leaf	11.50 x 2.18	1.3	1.1	1.6

MATERIALS AND PARTS

- As with all Technal systems, only the best materials and parts are used to minimise maintenance and ensure long-term performance.
- The aluminium profiles are extruded from alloys 6060 Building compliant with EN 12020, EN 573-3, EN 515 and EN 775-1 to 9.
 - Fittings are cast from EN 12844 compliant Zamak 5.
 - All seals are EPDM or TPE (Thermoplastic elastomer).
 - The polyamide thermal breaks are extruded from pA6-6 (0.25 FV).
 - Screws are made from stainless steel.

FINISHES AND COLOURS

- A wide range of finishes and colours is available to meet individual project requirements, enhancing existing buildings and offering architects and designers greater design freedom:
- Natural anodised in accordance with EN 123731: 2001.
 - Polyester coating finishes in a wide range of colours in accordance with "QUALICOAT" instructions.
 - AMBIAL is also available in lacquered finishes with exclusive Technal colours for a stylish and contemporary look.



IMAGINE WHAT'S NEXT

270, rue Léon-Joulin
BP 63709 - 31037 Toulouse cedex 1
FRANCE - www.technal.com

